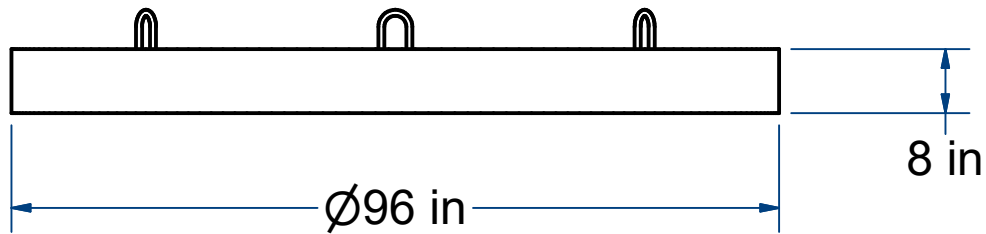
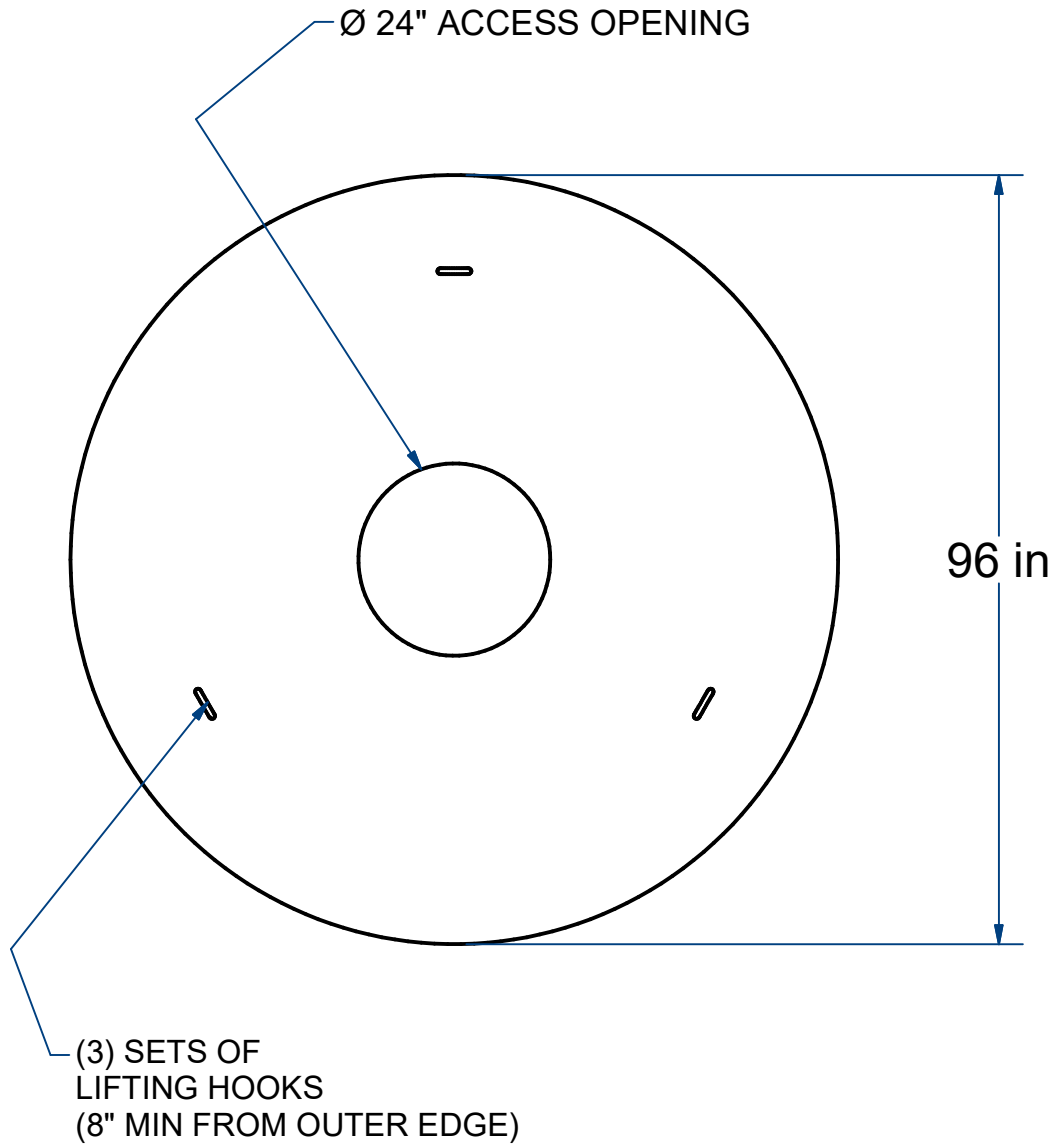


ACME-SHOREY

PRECAST CONCRETE PRODUCTS

NOTES:

- 1.) OPTIONAL: Ø24" ACCESS COVER.
- 2.) USE W/ Ø8' O.D. LEACHING PITS.



NAME: SLAB COVER, 8'DIA

H-20

ITEM# C8

Concrete Minimum Strength: 5,000 p.s.i. at 28 days
 Steel Reinforcement: ASTM A615, Grade 60
 Design Loading: standard units - AASHTO - H20

WEIGHT 4,720 Lbs

CH

DATE: 8-18-23

Ch 12 Pg 9.2 Sht 1