

ACME-SHOREY

PRECAST CONCRETE PRODUCTS

WWW.ACMESHOREY.COM

PHONE (508) 548-9607

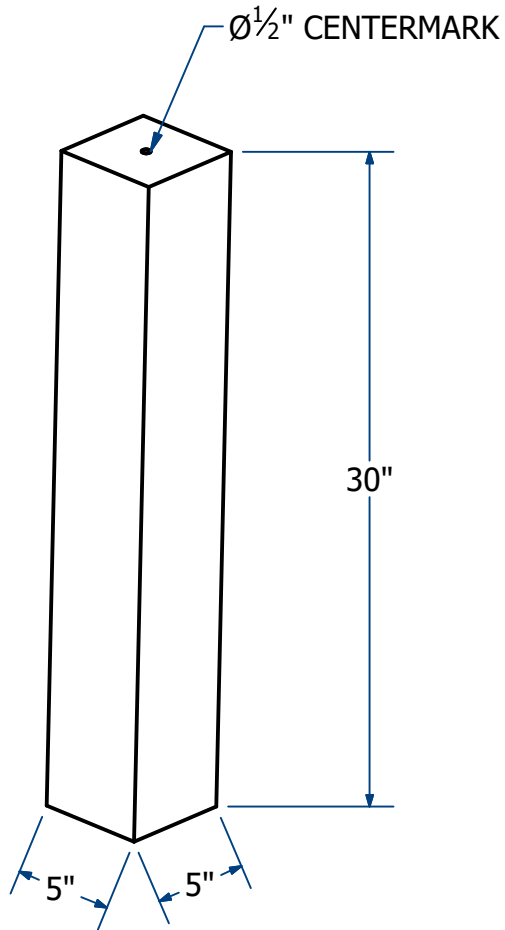
FAX (508) 548-1664

CARVER, MA
334 TREMONT STREET

HARWICH, MA
36 GREAT WESTERN ROAD

NOTES:

1.) X



ENGINEER BOUNDS

5" x 5"

H20

ITEM# EB5

Wt. 70

Lbs

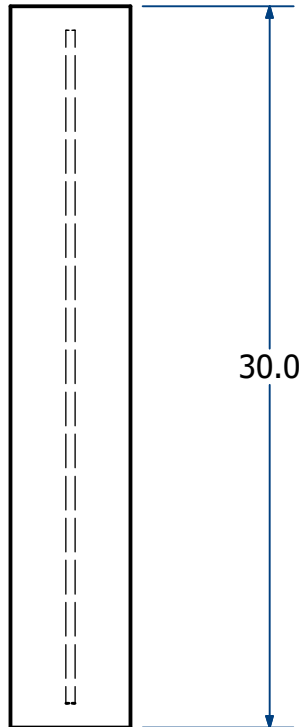
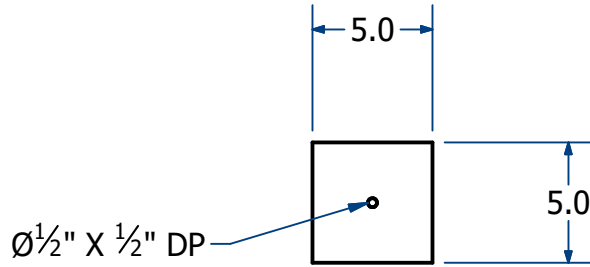
19-3.1

Sht 1 of 2

ACME-SHOREY

PRECAST CONCRETE PRODUCTS

NOTES:
1.) X



NAME: ENGINEER BOUNDS , 5" x 5" x 30"Ht

H-20

ITEM# EB5

Concrete Minimum Strength: 5,000 p.s.i. at 28 days
Steel Reinforcement: ASTM A615, Grade 60
Design Loading: standard units - AASHTO - H20

WEIGHT 70

Lbs

CH

DATE: 5-18-20

Ch 19 Pg 3.1 Sht 2 of 2