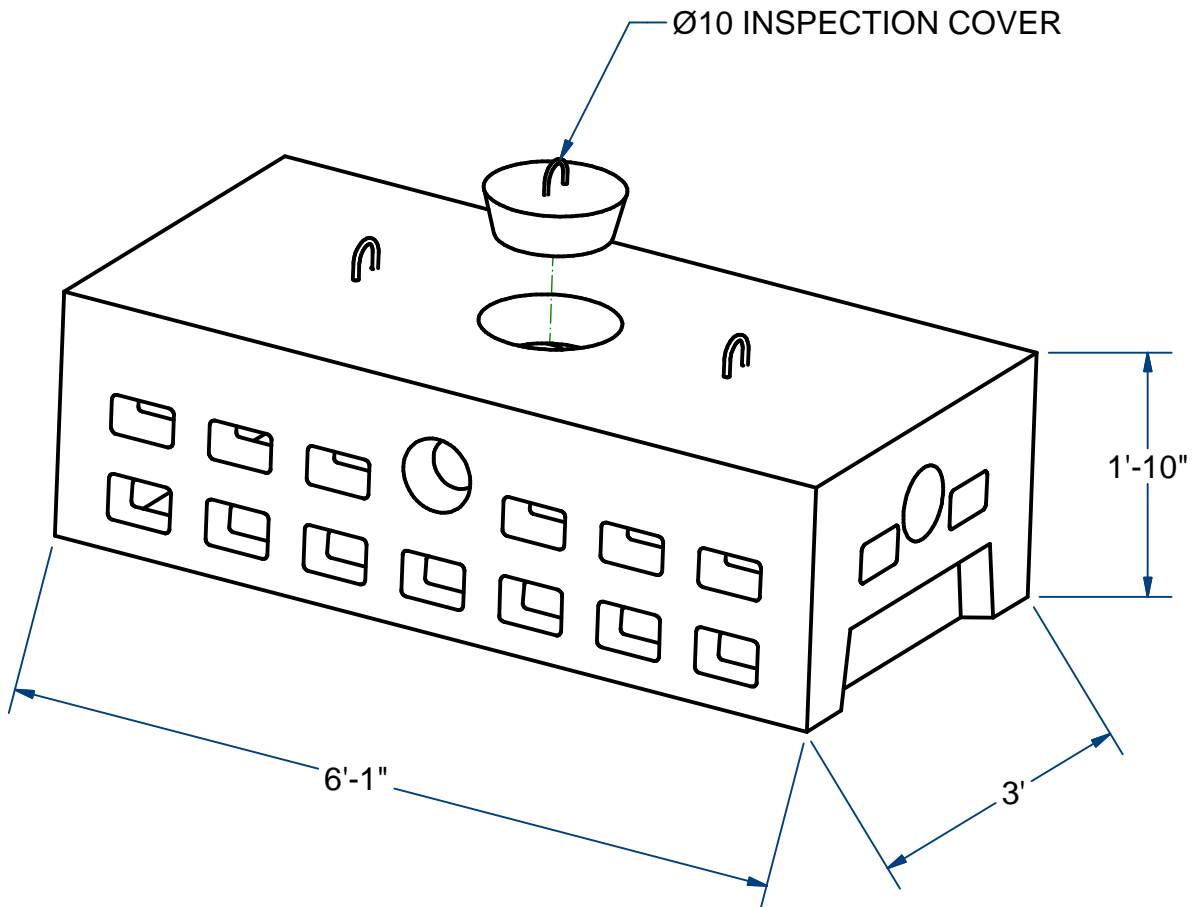


NOTES:  
 1.) DRAINAGE PRODUCT.



**LEACHING CHAMBER**

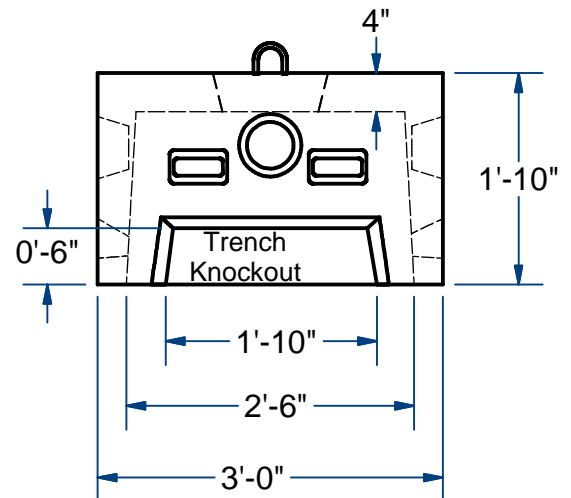
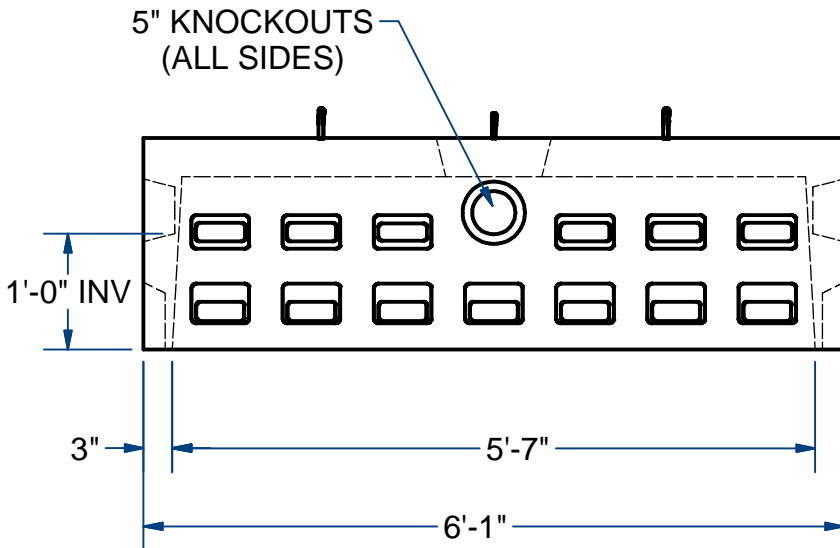
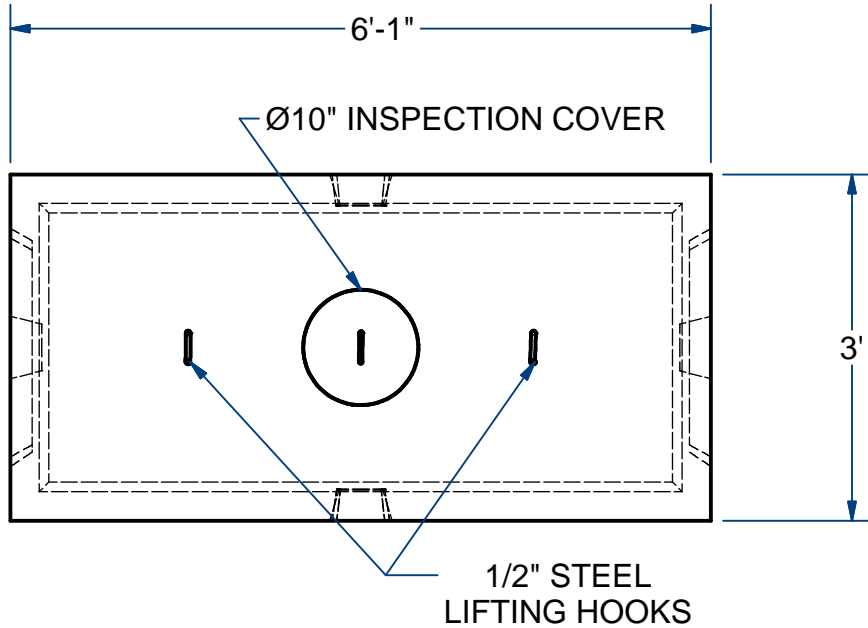
H20

125 Gallon

# ACME-SHOREY

PRECAST CONCRETE PRODUCTS

NOTES:  
1.) DRAINAGE PRODUCT.



**NAME: LEACHING CHAMBER, 125 Gallon**

**H-20**

**ITEM# LC1252**

Concrete Minimum Strength: 5,000 p.s.i. at 28 days  
Steel Reinforcement: ASTM A615, Grade 60  
Design Loading: standard units - AASHTO - H20

WEIGHT 1,900 Lbs

A

DATE: 4-14-2018

Ch 12 Pg 3.1 Sht 2 of 2