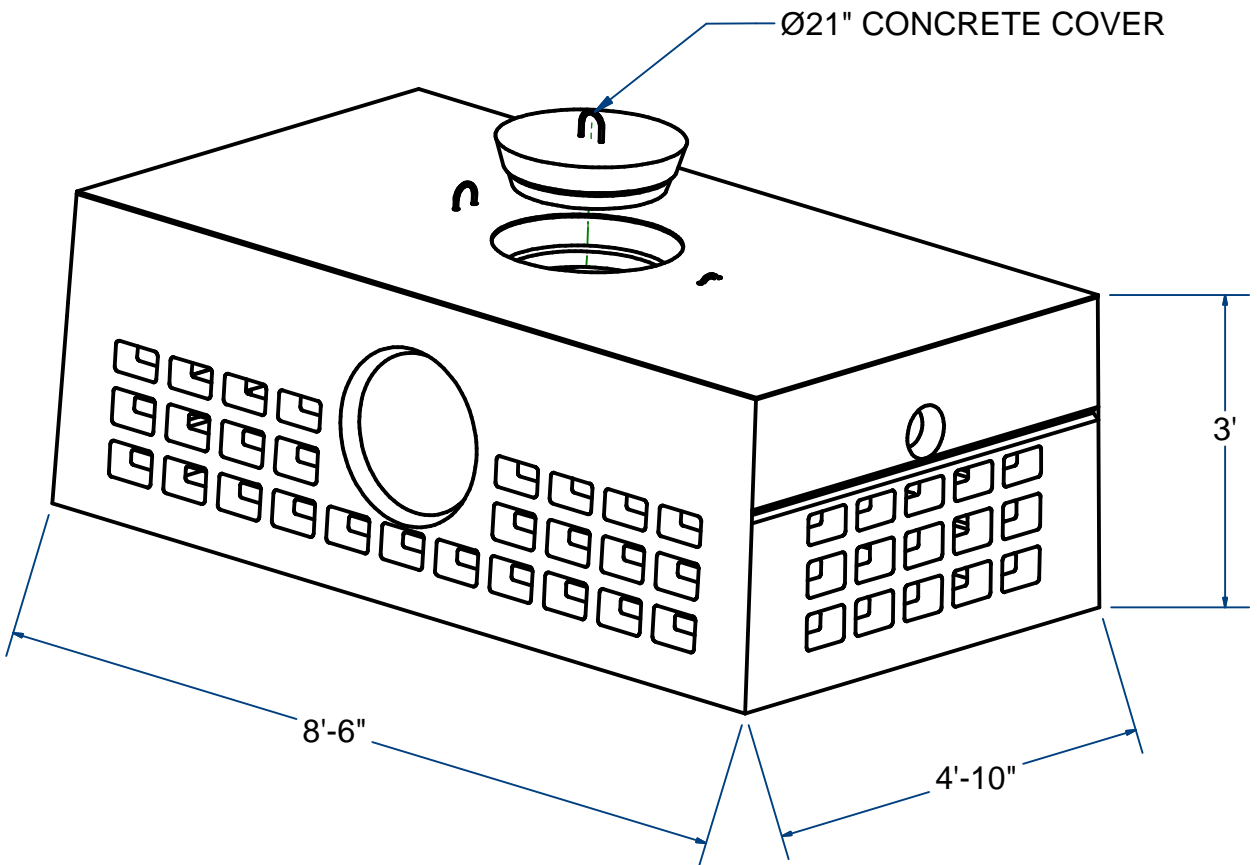


NOTES:  
1.) DRAINAGE PRODUCT.



**LEACHING CHAMBER W/(3) 18" dia K.O.**

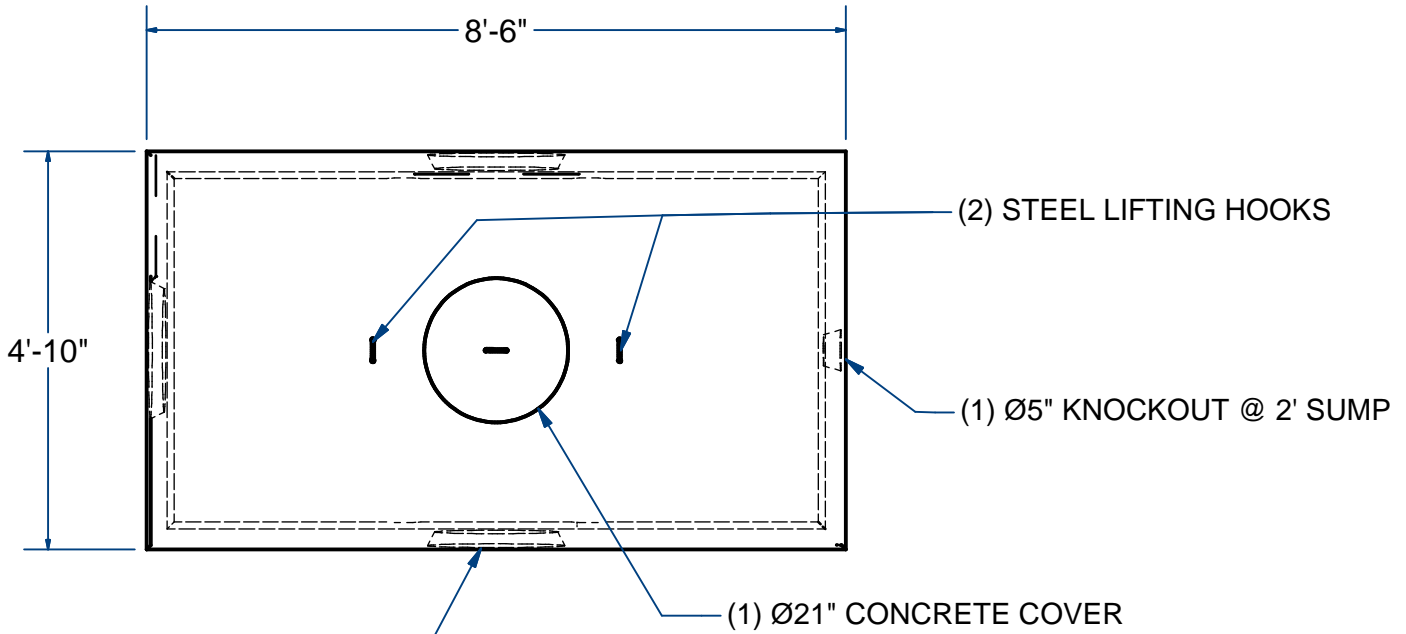
H20

500 Gallon

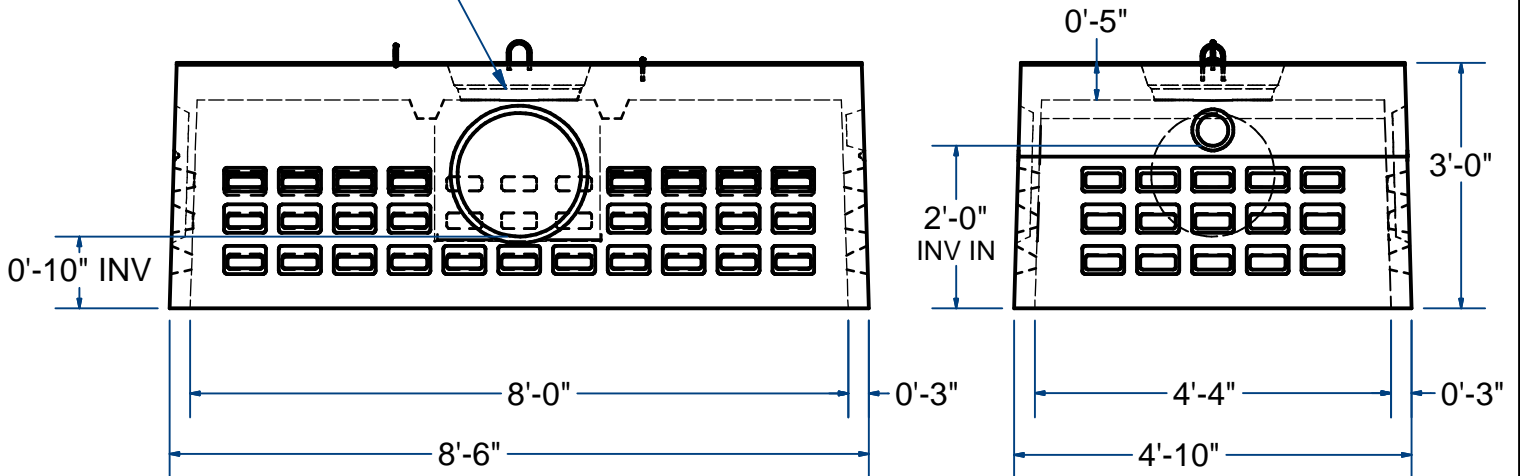
# ACME-SHOREY

PRECAST CONCRETE PRODUCTS

NOTES:  
1.) DRAINAGE PRODUCT.



(3) Ø18" KNOCKOUT INV= 10"



**NAME: LEACHING CHAMBER, 500 Gallon, (3) 18" K.O. H-20**

**ITEM# LC52KO**

Concrete Minimum Strength: 5,000 p.s.i. at 28 days  
Steel Reinforcement: ASTM A615, Grade 60  
Design Loading: standard units - AASHTO - H20

WEIGHT 4,800 Lbs

A

DATE: 7-31-2018

Ch 12 Pg 3.3 Sht 2 of 2