

ACME-SHOREY

PRECAST CONCRETE PRODUCTS

WWW.ACME-SHOREY.COM

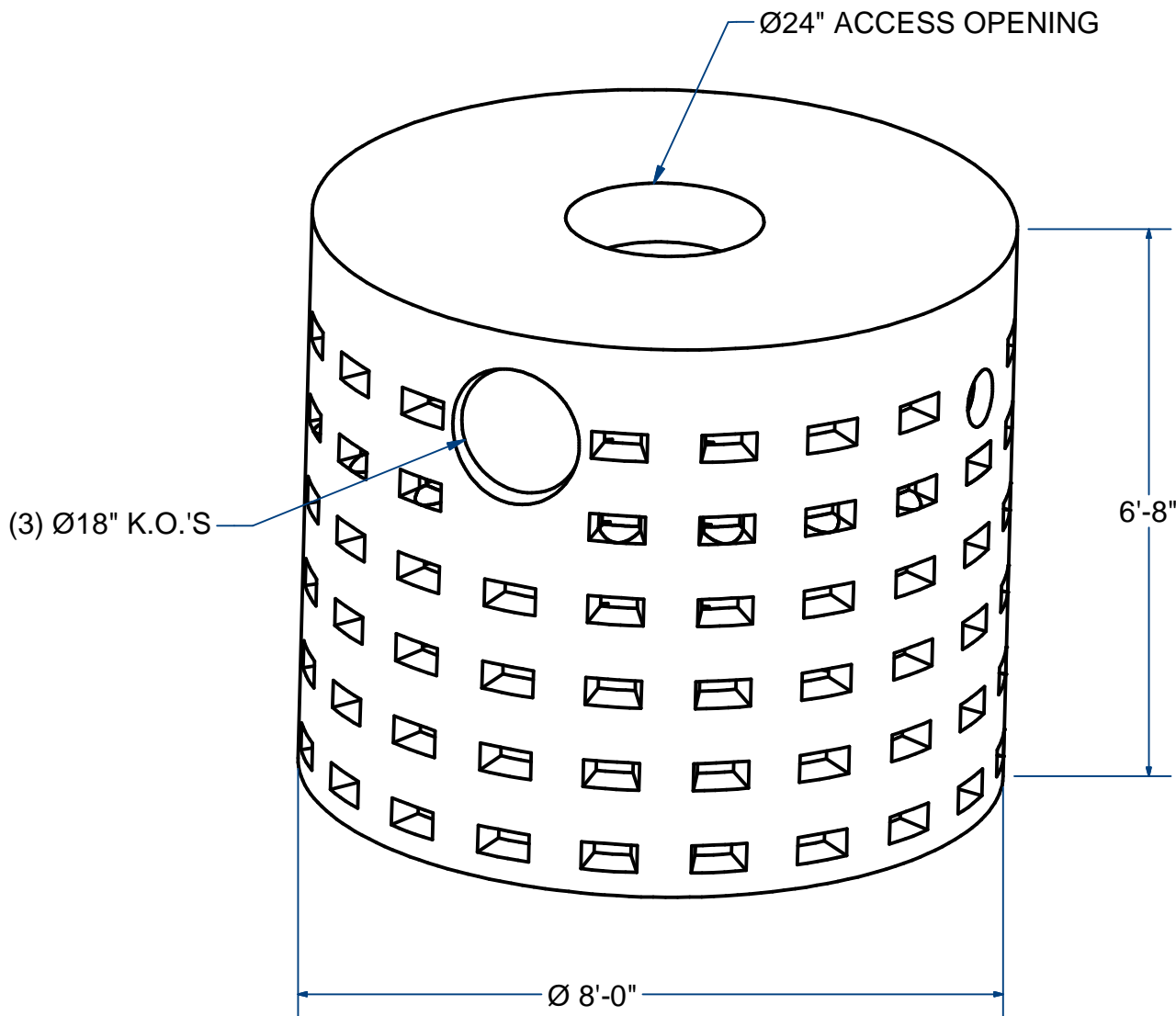
PHONE (508) 548-9607

FAX (508) 548-1664

CARVER, MA
334 TREMONT STREET

HARWICH, MA
36 GREAT WESTERN ROAD

NOTES:
1.) DRAINAGE PRODUCT.



LEACHING PIT

8' O.D. X 6'-8" Ht.

H20

ITEM# LP862

Wt. 11,880 Lbs

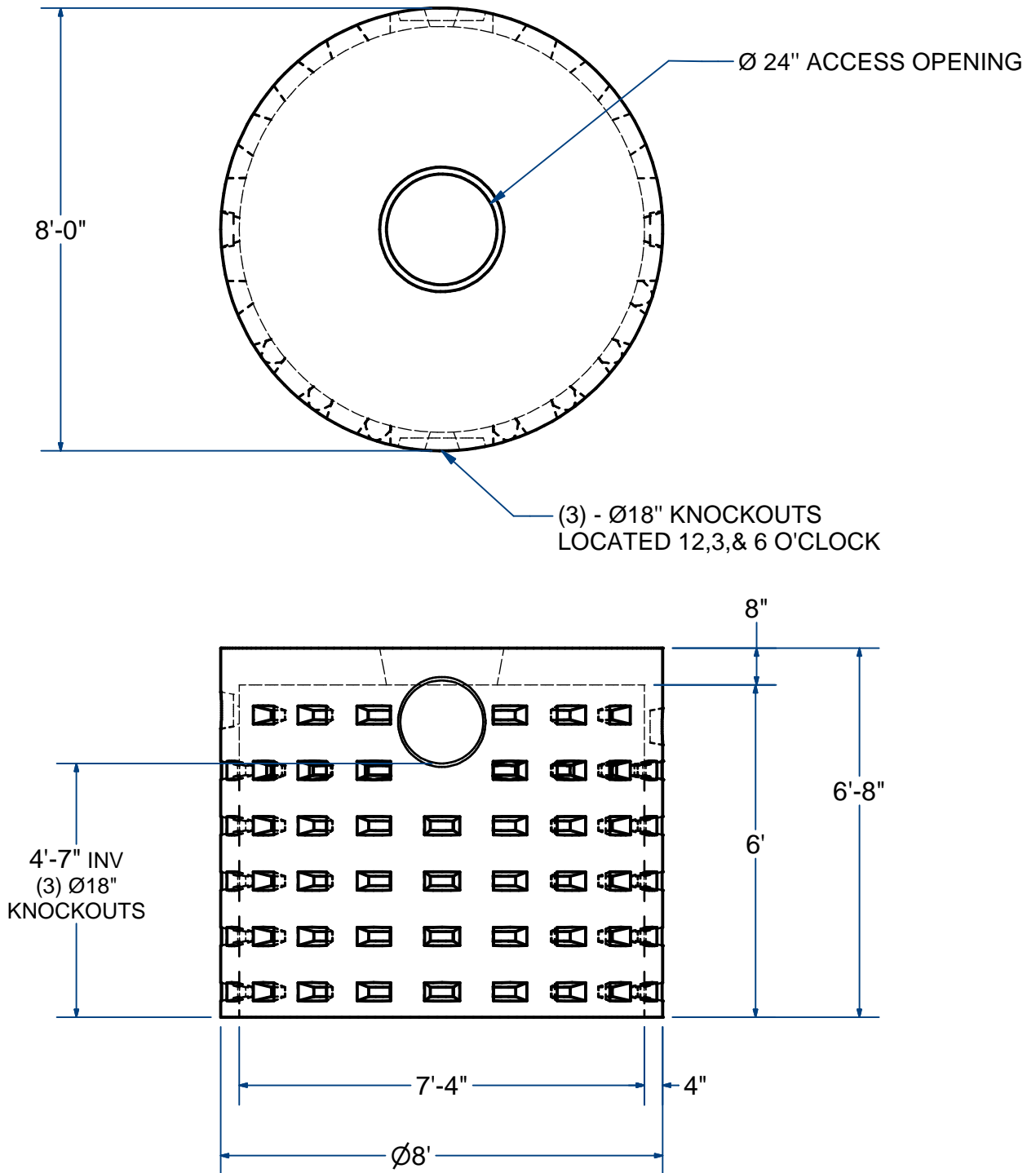
12-7.3

Sht 1 of 2

ACME-SHOREY

PRECAST CONCRETE PRODUCTS

NOTES:
1.) DRAINAGE PRODUCT.



NAME: LEACHING PIT, 8' O.D. x 6'-8" Ht.

H-20

ITEM# LP862

Concrete Minimum Strength: 5,000 p.s.i. at 28 days
Steel Reinforcement: ASTM A615, Grade 60
Design Loading: standard units - AASHTO - H20

WEIGHT 11,880 Lbs

A

DATE: 7-13-2018

Ch 12 Pg 7.3 Sht 2 of 2