

# ACME-SHOREY

PRECAST CONCRETE PRODUCTS

WWW.ACME-SHOREY.COM

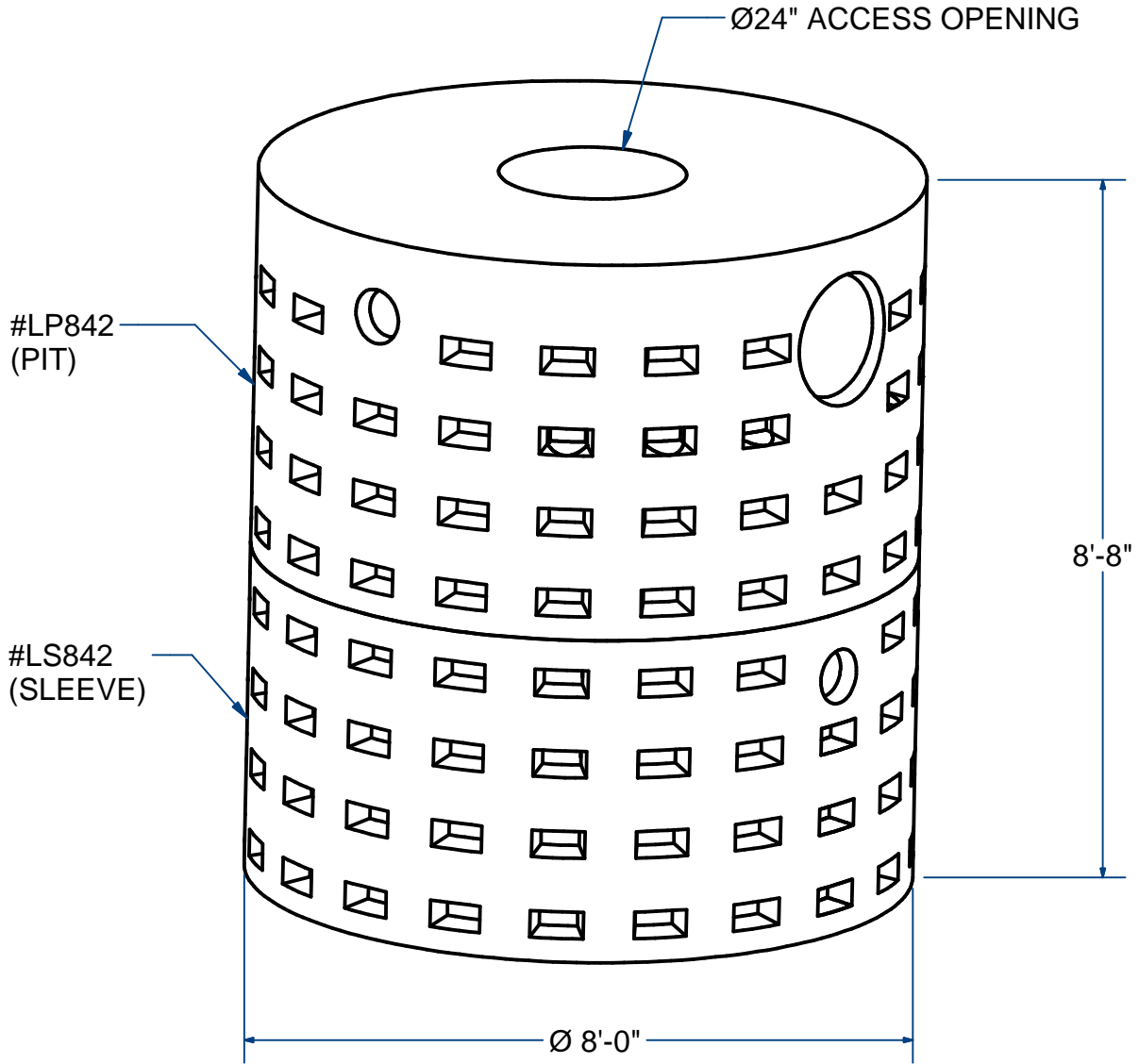
PHONE (508) 548-9607

FAX (508) 548-1664

CARVER, MA  
334 TREMONT STREET

HARWICH, MA  
36 GREAT WESTERN ROAD

- NOTES:  
1.) DRAINAGE PRODUCT.  
2.) CAN INTER-CHANGE SLEEVES AS REQUIRED.



## LEACHING PIT

8' O.D. X 8'-8"Ht.

H20

ITEM# LP882

Wt. 14,100 Lbs

12-7.4

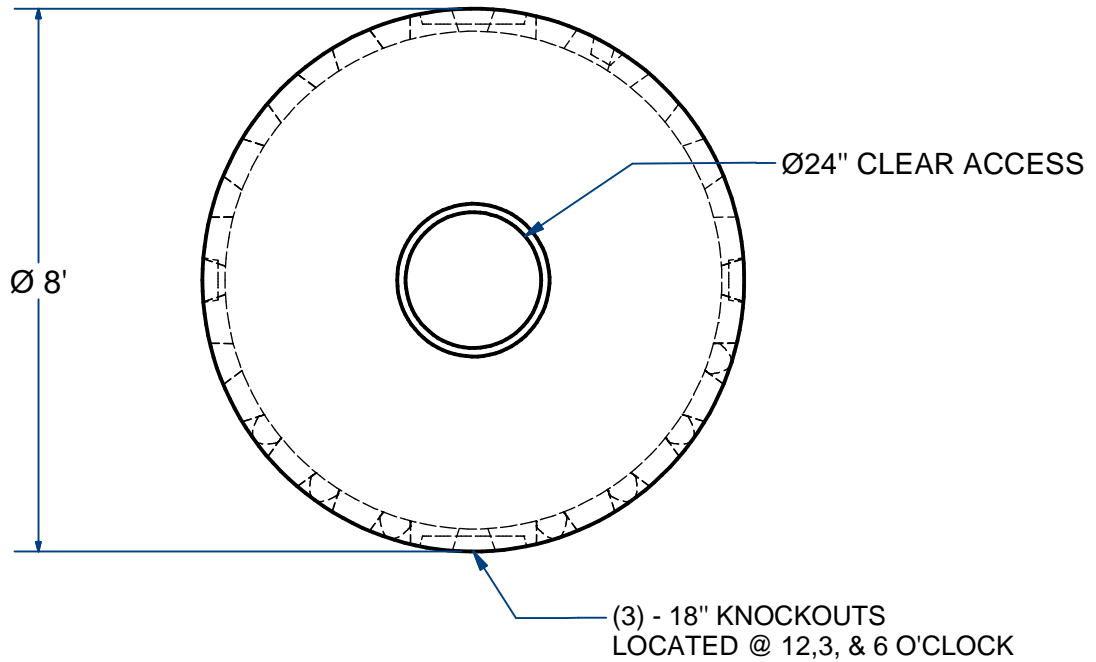
Sht 1 of 2

# ACME-SHOREY

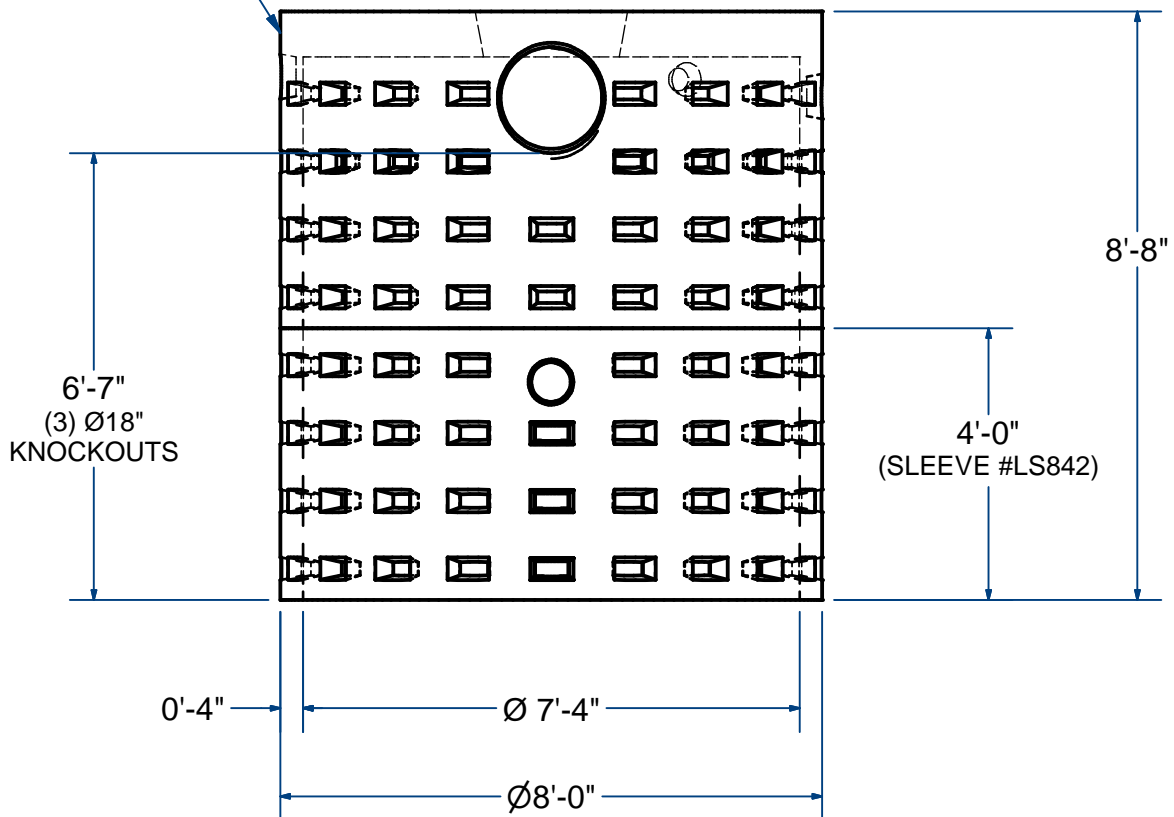
PRECAST CONCRETE PRODUCTS

NOTES:

- 1.) DRAINAGE PRODUCTS.
- 2.) CAN INTER-CHANGE SLEEVES AS REQUIRED.



TOP SECTION#LP842



**NAME: LEACHING PIT, 8'O.D. x 8'-8" Ht**

**H-20**

**ITEM# LP882**

Concrete Minimum Strength: 5,000 p.s.i. at 28 days  
 Steel Reinforcement: ASTM A615, Grade 60  
 Design Loading: standard units - AASHTO - H20

WEIGHT 4,562 Lbs

A

DATE: 9-1-2018