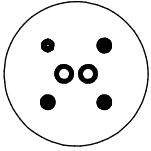


# ACME-SHOREY

PRECAST CONCRETE PRODUCTS

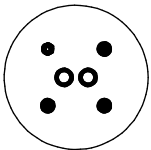
WWW.ACME-SHOREY.COM  
PHONE (508) 548-9607

## CONDUIT LOCATIONS



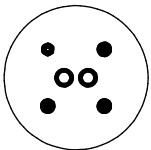
POLE# \_\_\_\_\_

Qty# \_\_\_\_\_



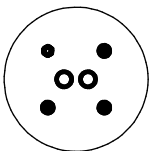
POLE# \_\_\_\_\_

Qty# \_\_\_\_\_



POLE# \_\_\_\_\_

Qty# \_\_\_\_\_

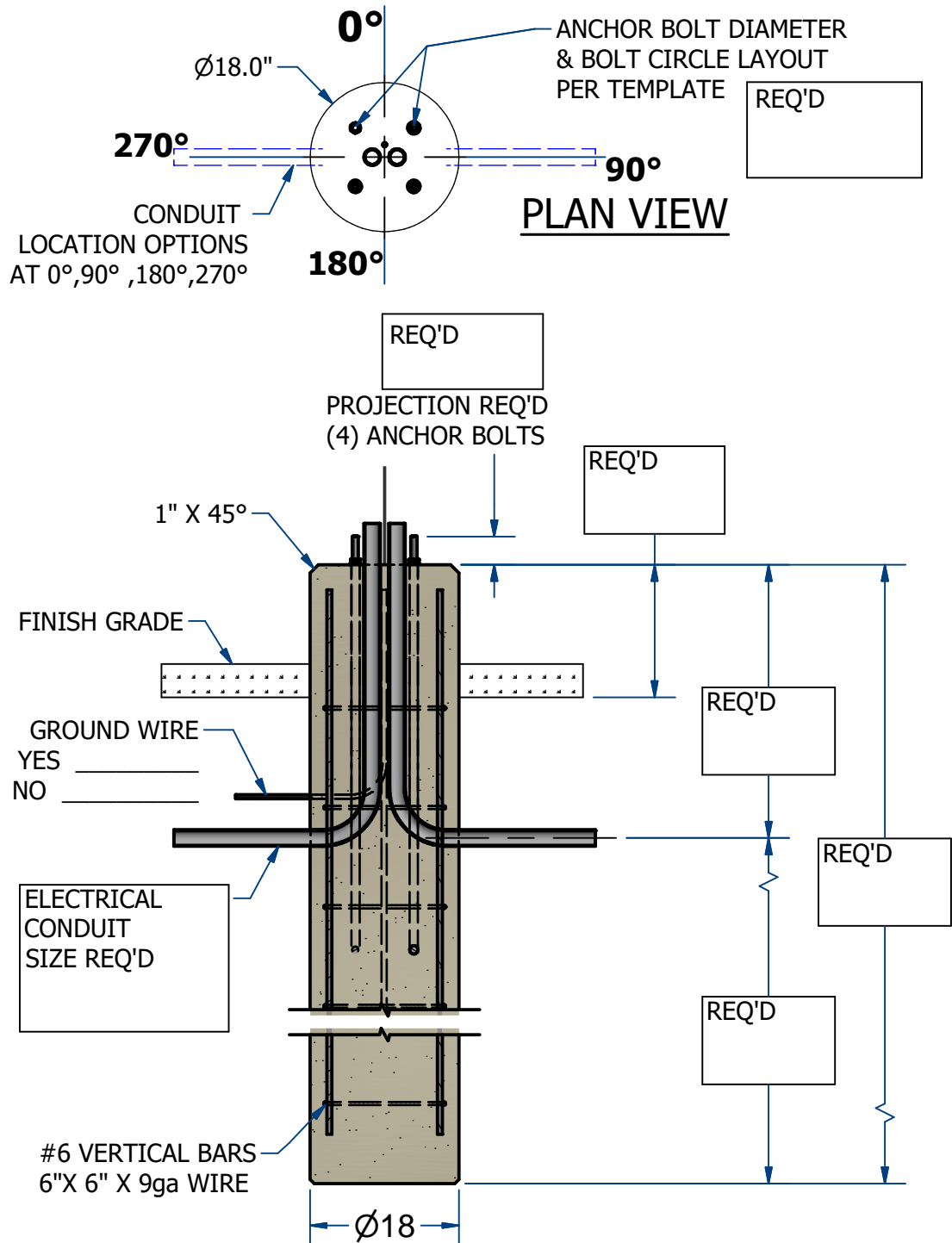


POLE# \_\_\_\_\_

Qty# \_\_\_\_\_

### NOTES:

- 1.) CONTRACTOR TO SUPPLY ELECTRICAL CONDUITS, GROUNDING WIRES, BOLT PATTERNS, ANCHOR BOLTS, NUTS & WASHERS.
- 2.) CONTRACTOR TO INDICATE CONDUIT LOCATIONS & QUANTITIES.



Contractor Signature:

S.O.#

Customer Signature:

**NAME: LIGHT POLE BASE ASSEMBLY, 18" DIA**

**ITEM# LPB18**

Concrete Minimum Strength: 5,000 p.s.i. at 28 days  
Steel Reinforcement: ASTM A615, Grade 60

WEIGHT 265 PVF

CH

DATE: 4-28-23