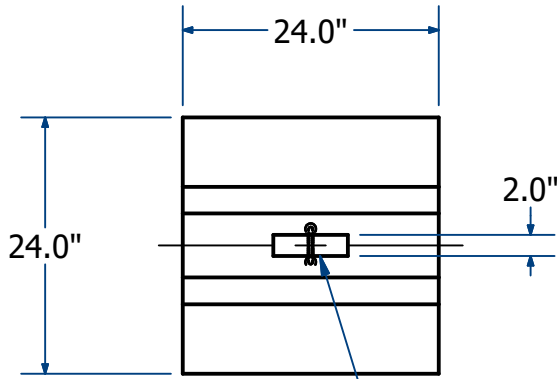
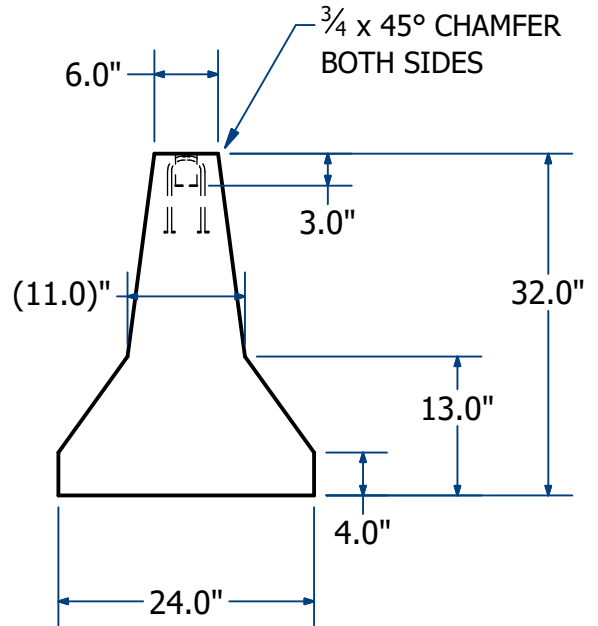
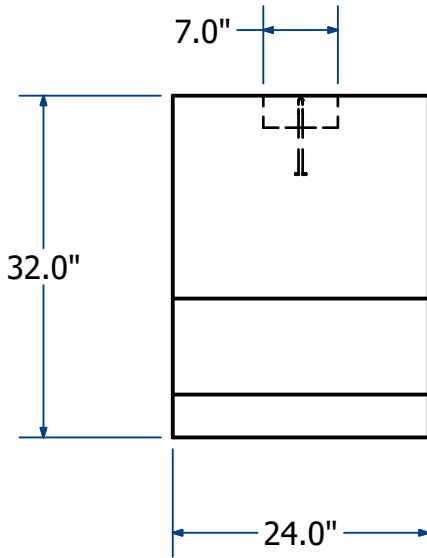
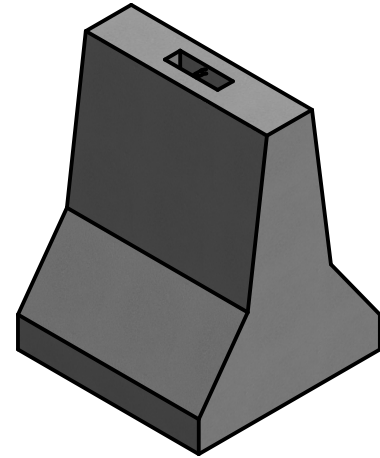


ACME-SHOREY

PRECAST CONCRETE PRODUCTS



(1) Ø3/8"x 7 R-LIFTING ANCHOR
ALP #LRA387G
(MTD BELOW SURFACE)



NAME: MINI BARRIER 2' X 2' X 2'-8"Ht

H-20

**ITEM#
MBARRIER**

Concrete Minimum Strength: 5,000 p.s.i. at 28 days
Steel Reinforcement: ASTM A615, Grade 60
Design Loading: standard units - AASHTO - H20

WEIGHT 950 Lbs

C

DATE: 4-6-23

Ch 19 Pg 8.2 Sht 1 OF 1