

ACME-SHOREY

PRECAST CONCRETE PRODUCTS

WWW.ACMESHOREY.COM

PHONE (508) 548-9607

FAX (508) 548-1664

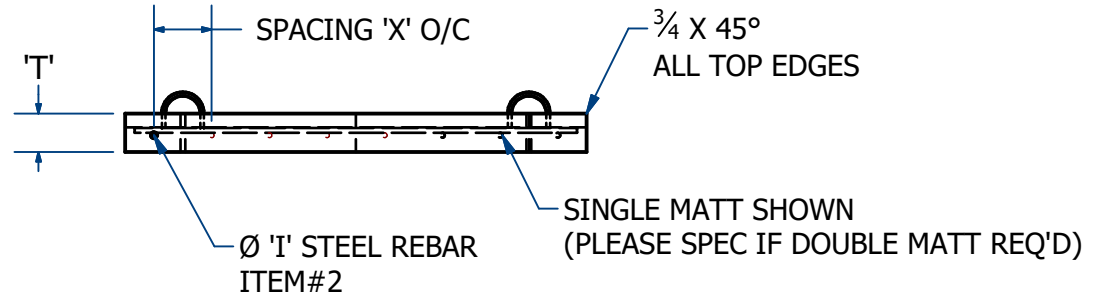
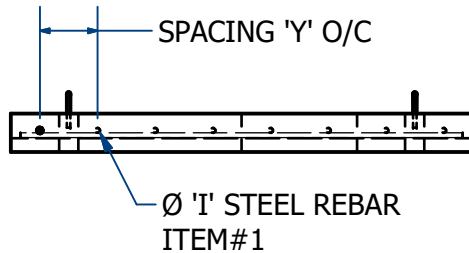
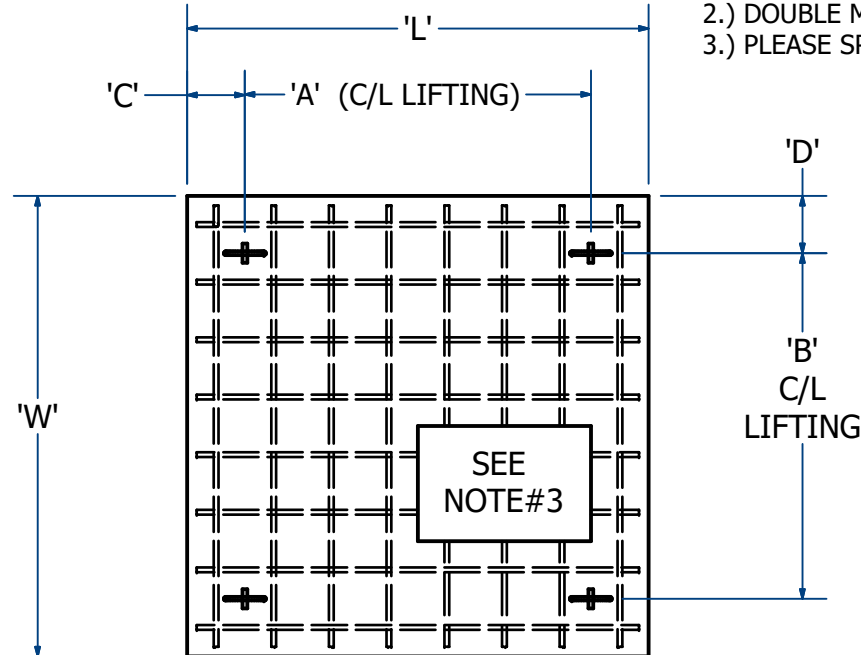
CARVER, MA 02330
334 TREMONT STREET

HARWICH
36 GREAT WESTERN ROAD

SPECIFICATIONS	ITEM	VALUE
Length	L	
Width	W	
Thickness	T	
Lifting recessed	Y/N	
C/L Lifting	A	
C/L Lifting	B	
Lifting Loc	C	
Lifting Loc	D	
Rebar Size	I	
Qty & Spacing X		
Qty & Spacing 'Y'		
Single Matt	Y/N	
Double Matt	Y/N	

NOTES:

- 1.) MIN 2" REBAR CLEARANCE
- 2.) DOUBLE MAT REBAR OPTIONAL
- 3.) PLEASE SPECIFY IF ACCESS REQ'D.



NAME: PAD-LxWxT

Job#

ITEM# PAD-Sq

CONCRETE MINIMUM STRENGTH: 4,000 p.s.i. AT 28 DAYS
STEEL REINFORCEMENT: ASTM - A-615 - 68, GRADE 60
DESIGN LOADING: STANDARD UNITS: AASHO-H10

SUBMITTAL:

APPR. _____
Date _____

Location:

Name:

C DATE: 3-14-2023 R0

WEIGHT Lbs Sheet 1 of 1