

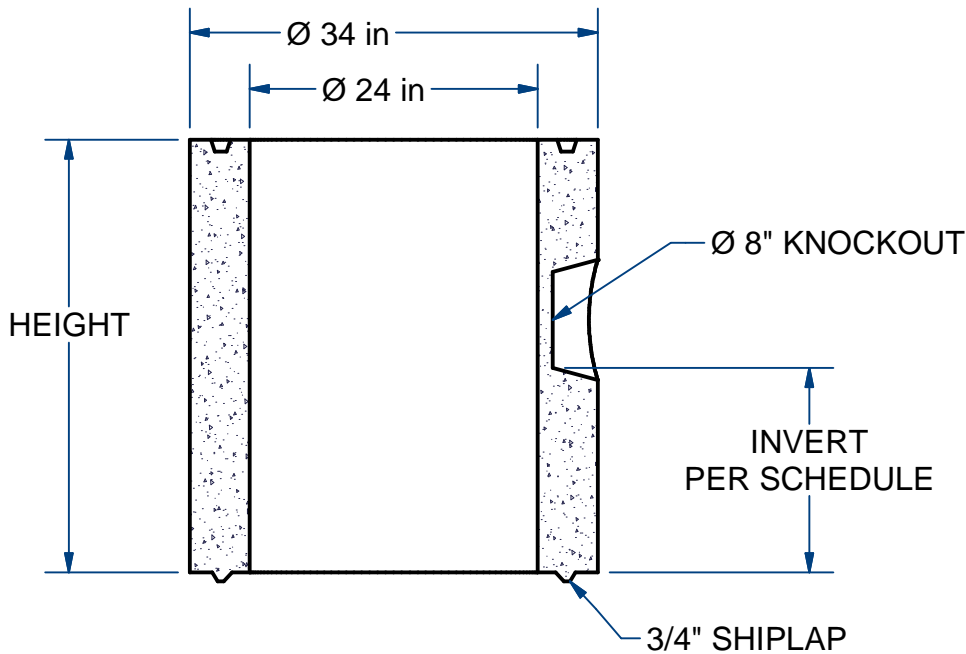
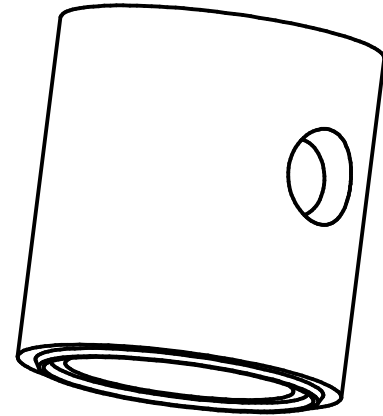
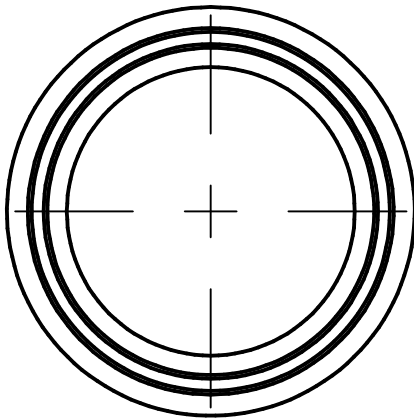
ACME-SHOREY

PRECAST CONCRETE PRODUCTS

NOTES:

- 1.) RISERS HAVE A TOP GROOVE & BOTTOM LIP TO ALIGN WHEN STACKED.
- 2.) KNOCKOUTS AVAILABLE IN 2',3',& 4' RISERS.

Part#	Description-Risers	O.D.	Height	invert	Lbs	Sct.	Co.
R24 X 06	Round Riser, 24" id	34" od	6"	n/a	225	13 - 1.1	A
R24 X 12	Round Riser, 24" id	34" od	12"	n/a	450	13 - 1.2	A
R24 X 18	Round Riser, 24" id	34" od	18"	4"	675	13 - 1.3	A
R24 X 24	Round Riser, 24" id	34" od	24"	8.5"	900	13 - 1.4	A
R24 X 36	Round Riser, 24" id	34" od	36"	14"	1350	13 - 1.5	A
R24 X 48	Round Riser, 24" id	34" od	48"	24"	1800	13 - 1.6	A



NAME: ROUND RISERS, 24" I.D. x 5" Wall H-20

ITEM# R24

Concrete Minimum Strength: 5,000 p.s.i. at 28 days
 Steel Reinforcement: ASTM A615, Grade 60
 Design Loading: standard units - AASHTO - H20

WEIGHT SEE Lbs
 SCHEDULE

C

DATE: 2-24-22

Ch 13 Pg 1.1-1.6 Sht 1